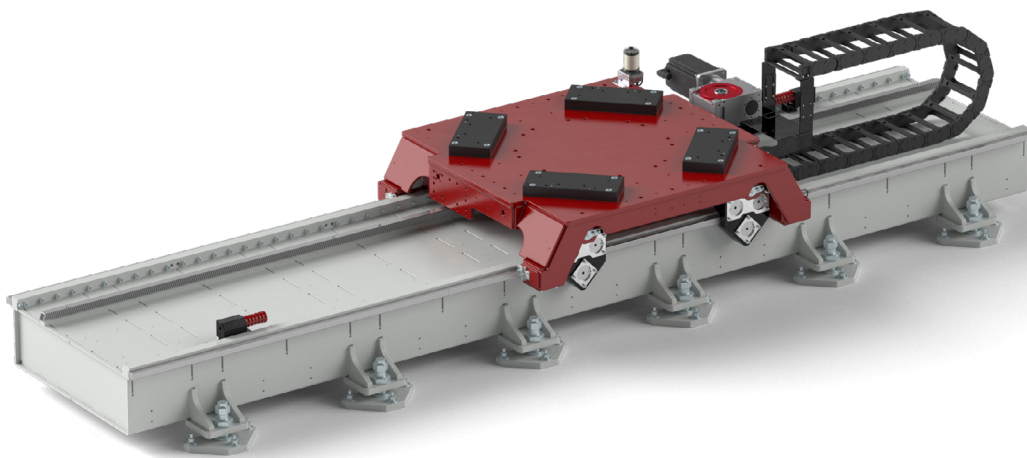


Heavy-duty TrackMotion

## The Hercules in production

### For the heavy robots – the linear track TMF-5



#### The linear track TMF-5

With the TMF product series in the heavy-duty range, Güdel continues to drive smooth production processes. The TMF-5 was developed specifically for heavy industrial robots. The TMF-5 moves a static payload of over ten tons and articulated arm robots including payload of over six tons. Up to four carriages travel

on the TMF-5. The industrial robots located on the TMF-5 can move a payload of up to 1300 kg. This enables fully flexible use in the heavy-duty sector. With its seventh axis, the TMF-5 opens up new work applications in the production process.



Linear track TMF-5 with ABB



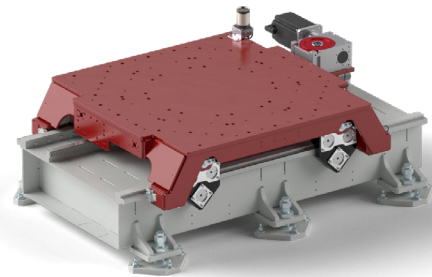
Linear track TMF-5 with FANUC



Linear track TMF-5 with KUKA

## TMF-5 moves the heavy industrial robots:

ABB IRB 8700  
 Fanuc M-1000-iA  
 Kuka KR 1000 titan



Industrial robots from other manufacturers on request.

## Impressive features of the Güdel TMF-5:

<b>Static payload</b>	11.680 kg
<b>Robot weight incl. payload</b>	6.300 kg
<b>Number of carriages</b>	Up to 4 carriages
<b>Guideway system</b>	Heavy-duty guideway system with flat rails and double roller support.
<b>Drive system</b>	Rack and pinions with helical gearing, hardened and ground. Güdel HPG 120 angle gearbox. Motors from ABB, Fanuc and Kuka, as standard, further motor types on request.
<b>Length and stroke</b>	Track length from 3 m to 100 m in 1 m steps. Strokes from 1 m to 98 m.
<b>Riser</b>	Standard Base heights 200 mm / 300 mm / 400 mm / 500 mm
<b>Floor mounting</b>	Anchor plate and anchor rod with floor leveling set. Floor thickness min. 200 mm. Pressure absorption of 5 t/m <sup>2</sup> . Concrete quality min. C20/25 (250 kp/cm <sup>2</sup> )
<b>Noise emission</b>	max. ≤ 80 DB(A)

## Güdel Group

Güdel is a manufacturer of high-precision machine components and provider of sophisticated automation solutions. Its spectrum of products ranges from linear guideways, racks, pinions and drives right through to linear axes and gantry robots. Güdel assembles its products into systems with a high degree of control intelligence

and complete plant installations, which can be used in the automotive, tire, metal, rail, intralogistics, pharmaceutical, renewable energy, wood, and aerospace industries. Güdel's technology is characterized by its innovation, quality and modularity.