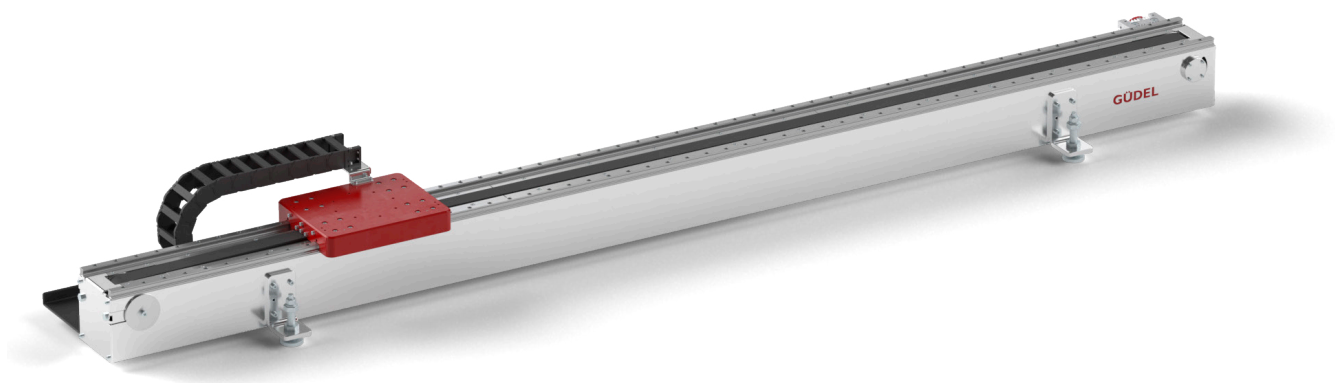


Robotics

Positioning axis

CoboMover CMF – Linear axis for cobots and small industrial robots



Linear axis for cobots

The Güdel CoboMover linear axis is used to extend the working range of a small industrial robot or cobot up to 5 meters. This allows it to operate several workstations and take on additional tasks. The CoboMover, developed and built in Switzerland, performs reliable work in the areas of welding, machine loading and machine operation. Other possible applications include packaging and palletizing goods.

The CoboMover is also a good partner for assembly work and surface treatment. Güdel has redesigned the seventh axis for cobots from scratch and, with over 70 years of experience in the field of linear technology a safe and reliable product on the market. However, should something not run perfectly, our worldwide service team will be happy to help.



CoboMover CMF traversing axis with ABB Cobot



CoboMover CMF traversing axis with Fanuc Cobot CRX-10iA



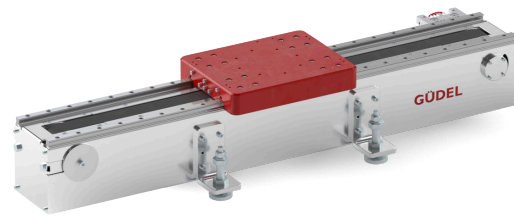
CoboMover CMF traversing axis with Kuka Cobot

CoboMover moves the following cobots, among others:

Fanuc CRX-5iA, -10iA, -10iA/L, -20iA/L

Mounting position (robot / cobot position)
0° and 180° possible.

Other manufacturers or types on request
or see Linear Track Selection Tool



Impressive features of the Güdel CoboMover:

Robot weight incl. payload	78 kg
Guideway system	Profile guide rails
Drive system	Toothed belt and HPG045 angular gearbox, designed for Fanuc motors
Stroke	1000, 2000, 3000, 4000, 5000 mm
Floor mounting	Floor levelling set with anchor rod
Noise emission	max. ≤ 80 DB(A)
Max. Speed	2 m/s
Max. Acceleration	2 m/s ²
Repeatability	± 0.05 mm

Güdel Group

Güdel was founded in 1954 and is an internationally active Swiss industrial company. As one of the leading global provider of solutions for industrial automation solutions, Güdel offers customers from a single source: from high-precision machine components to turnkey automation solutions in the automotive, railroad, logistics and machine tool markets, logistics and machine tools.

Güdel technology is characterized by innovation, modularity and quality. Güdel employs around 1000 people at over 20 locations worldwide. The group of companies has been owned by the owner family since it was founded.