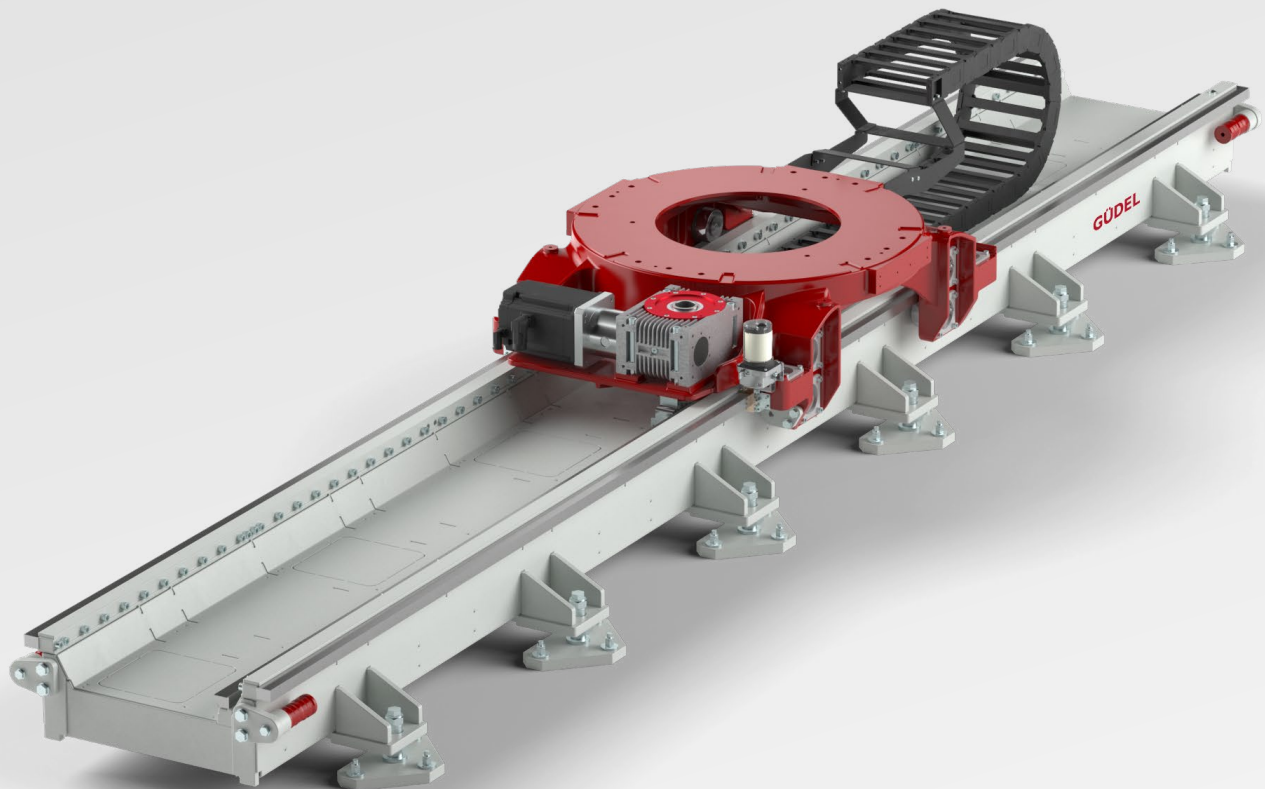


TMF-4-B

Dedicated to Body in White



TECHNICAL EXCELLENCE

EASY PLANNING

FAST INSTALLATION

ADVANTAGES

TECHNICAL EXCELLENCE



The TMF-4-B is a robot drive axis specially developed for the automotive body-in-white market and designed for a specific range of handling and welding robots. Güdel AG's longstanding experience in the automotive market has enabled it to create a product that satisfies all of the customer's requirements. Like all TrackMotion products from Güdel, the precision and rigidity are outstanding. The TMF-4-B moves your robot precisely the way you need it.

EASY PLANNING

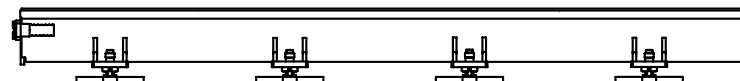
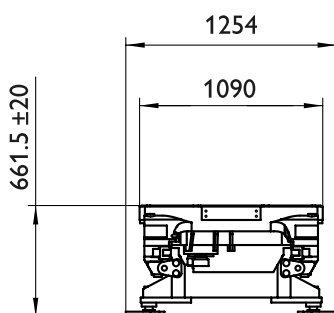
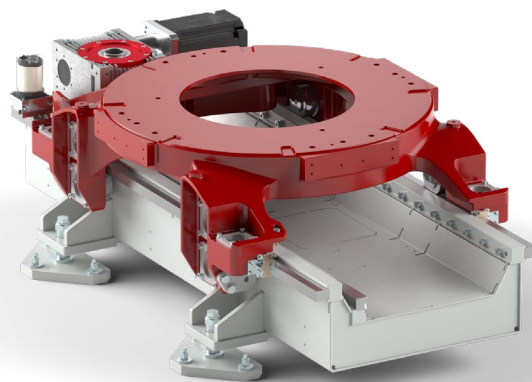


This standardized product is designed to fulfill the needs of the specific application. This leads to less planning and engineering effort when it comes to realization. Because the TMF-4-B is a one-size-fits-all axis, a wide range of robots can be moved using this single drive solution. The TMF-4-B comes with a simple configurator, which enables you to specifically configure the axis as required. The option to download the generated 3D models instantly further accelerates your planning phase.

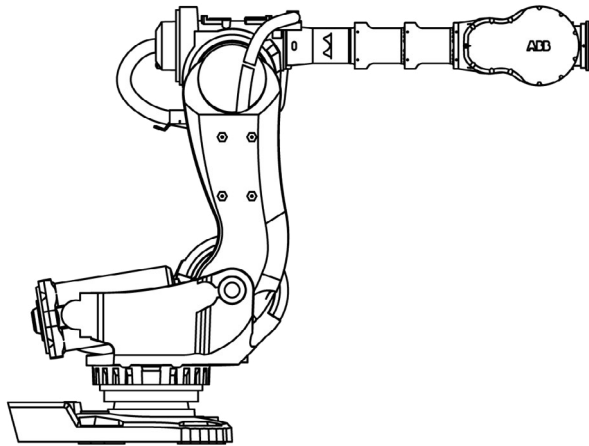
FAST INSTALLATION



Globally established production lines enable rapid manufacturing. This results in shorter delivery times and therefore greater flexibility. Both delivery times and commissioning effort are reduced thanks to the TMF-4-B's newly developed anchoring system, which makes welding superfluous and saves time.

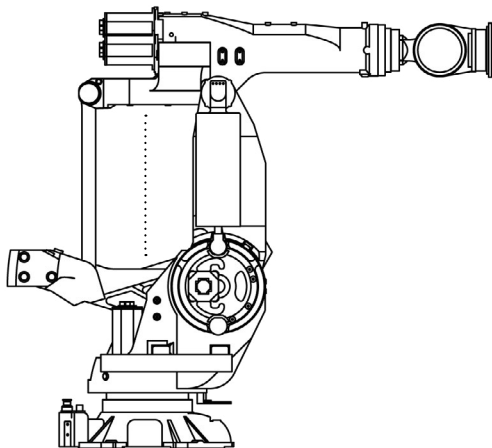


COMPATIBLE WITH OVER 130 ROBOTS



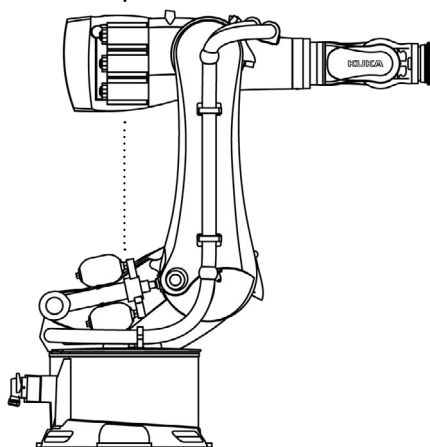
ABB

Series	Series
IRB6640	IRB6730
IRB6650	IRB6740
IRB6660	IRB7600
IRB6700	IRB7710
IRB6710	IRB7720
IRB6720	



FANUC

Series
R-2000
M-900

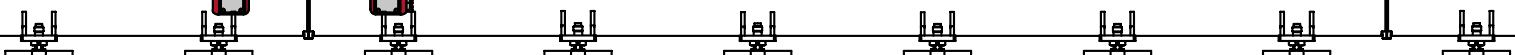
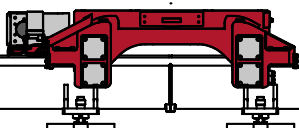


KUKA

Series
Quantec
Fortec
Fortec-ultra
Fortec 2



Scan to visit website
[https://www.gudel.com/
tmf-4-b/](https://www.gudel.com/tmf-4-b/)



TMF-4-B: Robot traversing axis optimized for car body in white. Güdel also offers a solution for almost all applications. We have suitable 7th axes for small to the largest articulated robots in our portfolio.

Our professional teams in more than 20 countries all over the world cover the entire customer journey. From the initial sale and engineering to project execution, maintenance and retrofit, Güdel is always by your side.

Güdel Group AG
Gaswerkstrasse 26
4900 Langenthal
Switzerland
+41 62 916 91 91
info@ch.gudel.com

We are there for you. Worldwide.

