

GÜDEL

Products for linear and
drivetrain systems

EN



Modularity

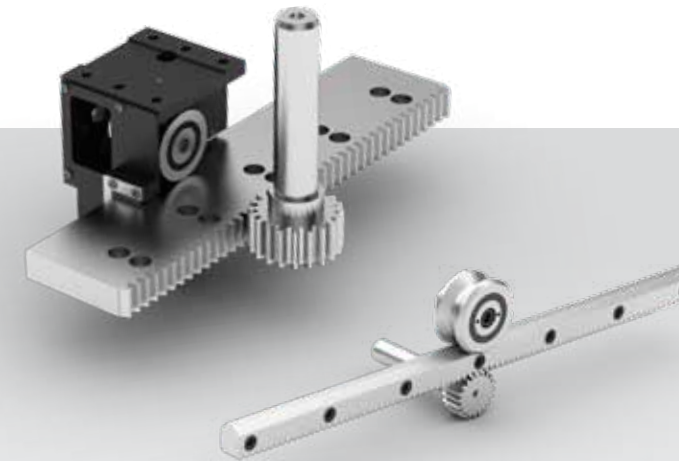
GÜDEL's expertise is in the development and manufacture of linear and drive components, and in the associated advisory services.

GÜDEL's product range of components, linear axes and robots, combined with the company's know-how in engineering and controls, provides the basis for your machine and system solutions.

GÜDEL's modules form the basis of the demonstration system at the exhibition.

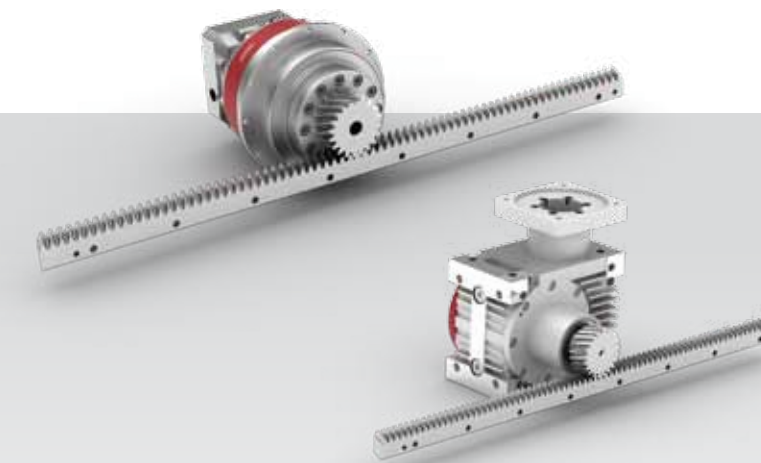
GÜDEL LINEAR AXES AND ROBOTS

The single-axis and portal robots are based on GÜDEL standard components. They cover a payload range of 10 to 3600 kg.



GÜDEL LINEAR GUIDEWAY SYSTEMS

The medium-duty series – with guide rollers and vee rails, is suitable for high speeds, low friction and accurate positioning. By contrast, the heavy-duty series – with integrated heavy-duty roller and carrier, flat guide tracks, drive units and beams – is ideal for greater loads.



GÜDEL GEARS

High-performance, servo-assisted worm drives are manufactured in six sizes and ten gear ratios. GÜDEL's compact planetary gears – with their high energy conversion efficiency and excellent transmission accuracy – are suitable for high-end power transmission requirements.



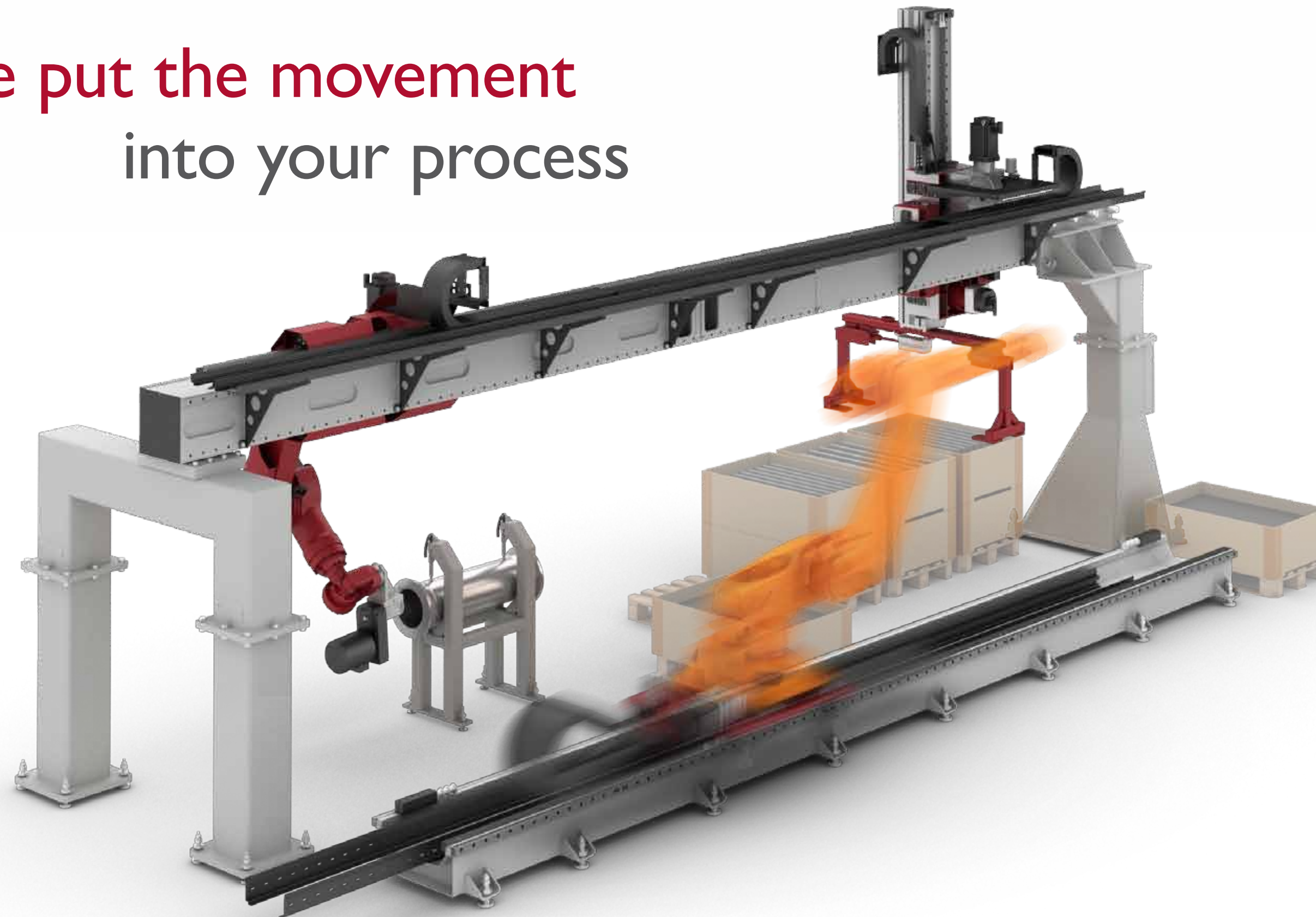
GÜDEL RACKS AND PINIONS

GÜDEL manufactures and markets various different types of racks and pinions, and develops special customised versions on request.

GÜDEL CUSTOMISED SOLUTIONS

GÜDEL linear guideway systems and racks are ideal for use in many different applications. They are resistant to contamination and provide particularly long life and travel. They are suitable for, amongst other things, machine tools, plasma, laser and water-jet cutters and special machine applications.

we put the movement
into your process



MILLING MACHINES



CUTTING EQUIPMENT



TRACK MOTIONS FOR ROBOTS

In environments with a high degree of contamination, we recommend the use of the tailor-made GÜDEL guideway cover, which affords excellent protection, yet is easy to fit and maintain.



we move you and this is how we do it



Advisory services



Development



Manufacture



Quality



Service

FOCUS

GÜDEL develops and manufactures an extensive range of components for linear and drivetrain systems.

GÜDEL products can be easily integrated into any machine and any system.

GÜDEL solutions include engineering consultancy services, assessments and the design and service of machines and installations.

EXTENDABLE

GÜDEL components are modular, which allows machines and installations to be planned, built and employed much more efficiently. Furthermore, GÜDEL supports its customers by encouraging joint co-operation during the design phase.

GÜDEL's linear and drivetrain systems, and the linear robots fitted to them, are extensive and modular. They can be assembled to form a specific customised solution, which provides a significant cost advantage and, moreover, saves time.

SWISS MADE

At GÜDEL, everything is done 'in house'. This also applies to the entire manufacturing process, i.e. milling, gear cutting, hardening, grinding, turning, assembly and packaging.

Because of the continuous investments that we make in our factories and the constant fine-tuning of the manufacturing processes, we are able to supply products of the highest quality at the right price.

SWISS QUALITY

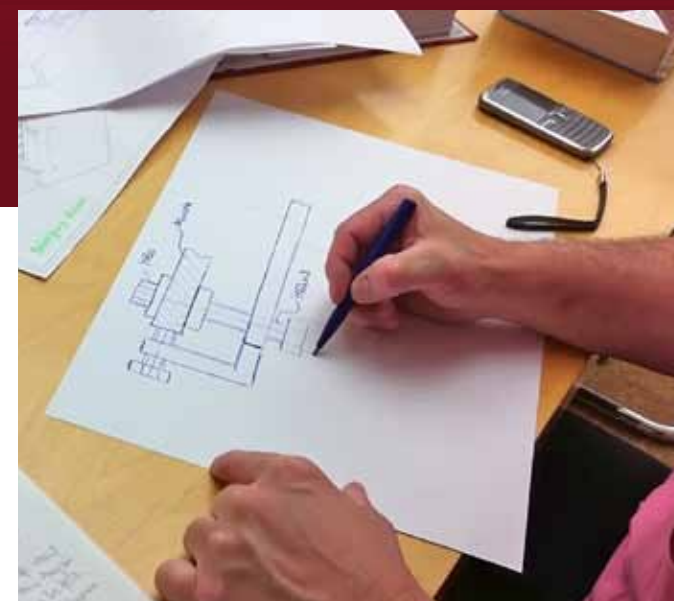
GÜDEL manufactures worldwide in its own factories in accordance with Swiss quality standards. Checks on quality, deadlines and costs at every level provide transparency and reliability.

This applies not only to the manufacture of our linear and drivetrain systems, but also to the performance process as a whole.

SERVICE

Machines and installations that run non-stop are connected with GÜDEL support seven days a week, twenty-four hours a day.

It is the duty of GÜDEL's service technicians to provide quick response times in order to maintain maximum availability of the system. Thanks to GÜDEL's modular system, all spare parts are available worldwide.



GÜDEL

«In a rapidly-changing world, we aim to set an example in terms of stability, ethics, behaviour and responsibility towards our customers, employees, business partners and the environment.»

Rudolf Güdel

GÜDEL develops, manufactures and markets automation solutions and machine components that increase the productivity of manufacturing and service processes. The company's products are used in general industry, transport, energy, logistics and warehousing.

Based in Switzerland, GÜDEL is active worldwide and has approximately 950 employees on twenty different production, sales and service sites on all five continents.

GÜDEL has been a family-owned firm since 1954 and has developed into one of the leading global technology companies for sophisticated system applications in automation, motion and drivetrain technology.

swiss quality made locally